

# Draft Comprehensive Plan for TSP Amendment Process

## CLATSOP County

- Permitted MREC Sites
- Marine Resource Development Area
- Marine Resource Use Management Area
- Marine Resource Conservation Area
- Marine Renewable Energy Exclusion Area
- Top 21% Coastal MREC Suitability
- Top 19% Middepth MREC Suitability
- Top 20% Offshore MREC Suitability



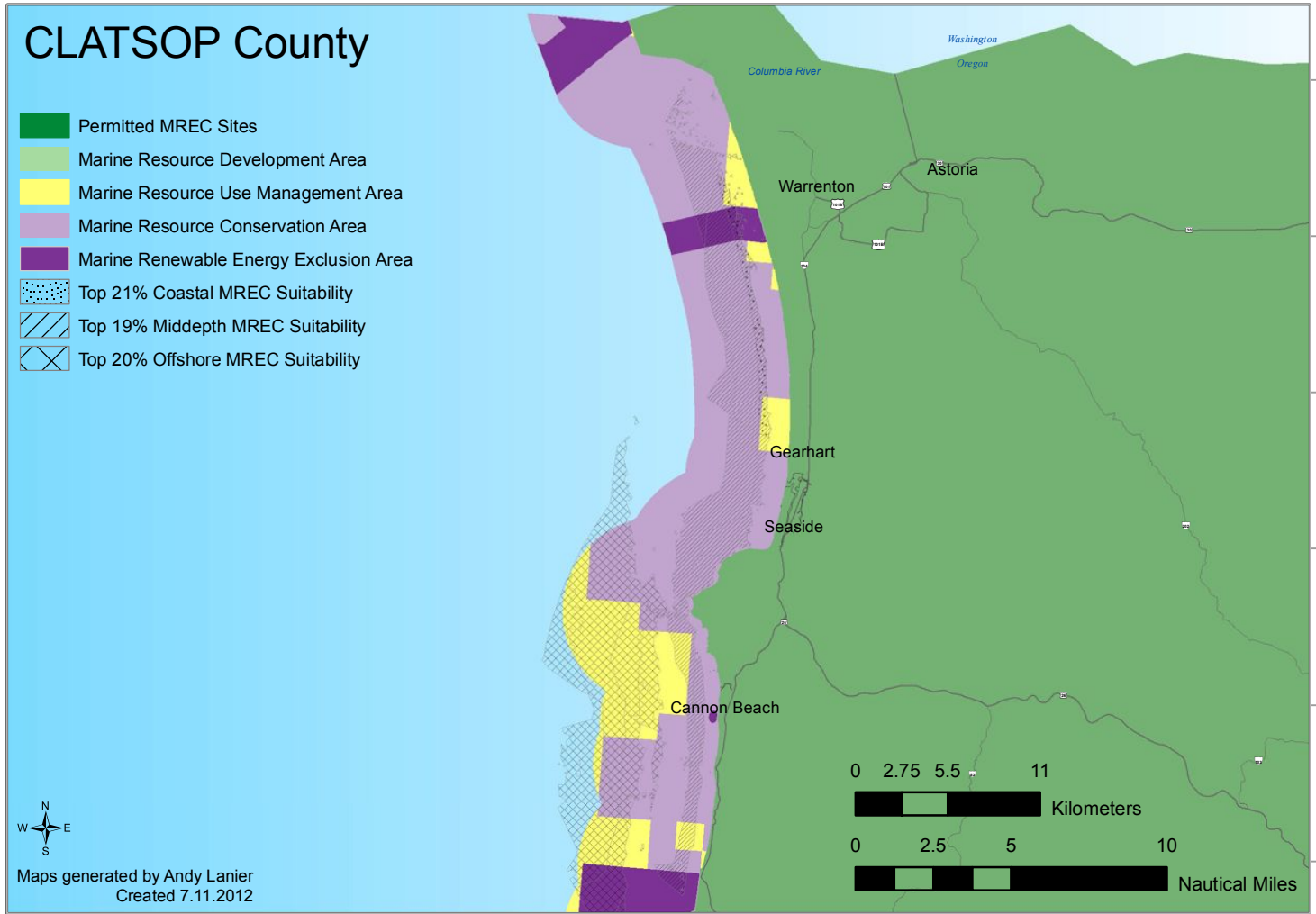
Maps generated by Andy Lanier  
Created 7.11.2012

0 2.75 5.5 11  
Kilometers

0 2.5 5 10  
Nautical Miles

124°25'W 124°20'W 124°15'W 124°10'W 124°5'W 124°0'W 123°55'W 123°50'W 123°45'W 123°40'W 123°35'W 123°30'W

46°15'N  
46°10'N  
46°5'N  
46°0'N  
45°55'N  
45°50'N



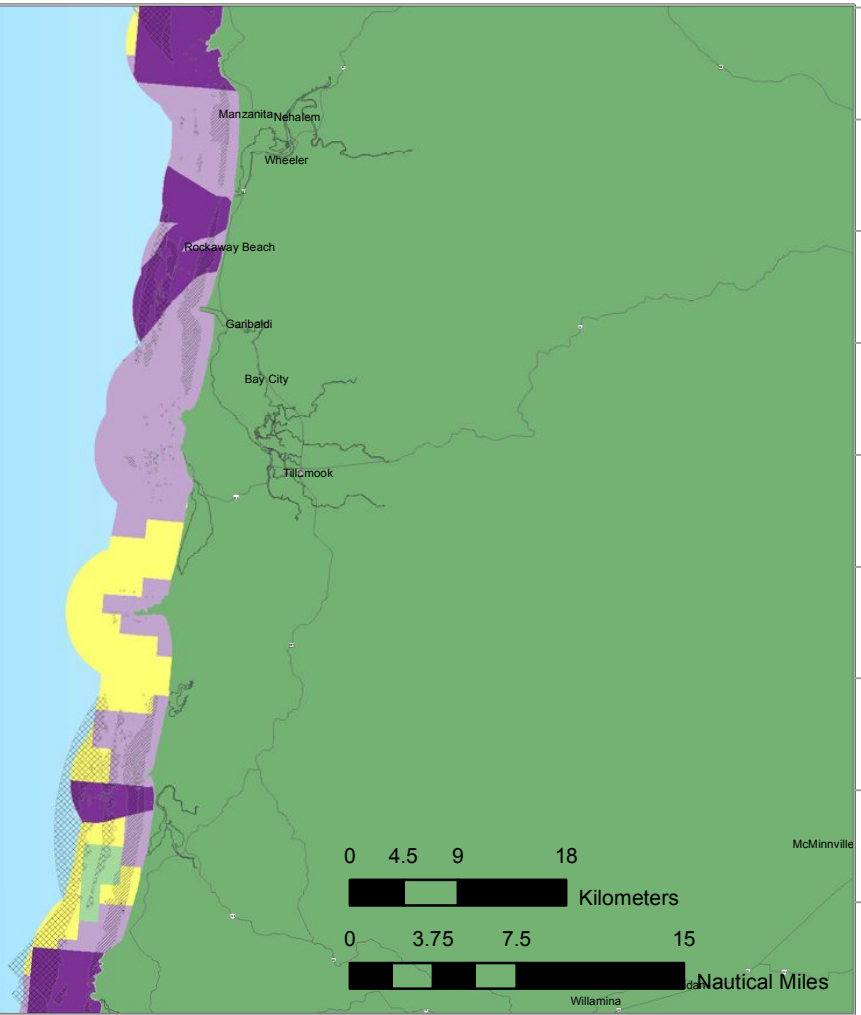
# Draft Comprehensive Plan for TSP Amendment Process

## TILLAMOOK County

- Permitted MREC Sites
- Marine Resource Development Area
- Marine Resource Use Management Area
- Marine Resource Conservation Area
- Marine Renewable Energy Exclusion Area
- Top 21% Coastal MREC Suitability
- Top 19% Middepth MREC Suitability
- Top 20% Offshore MREC Suitability



Maps generated by Andy Lanier  
Created 7.11.2012



0 4.5 9 18  
Kilometers

0 3.75 7.5 15  
Nautical Miles

124°40'W 124°30'W 124°20'W 124°10'W 124°0'W 123°50'W 123°40'W 123°30'W 123°20'W

45°50'N 45°45'N 45°40'N 45°35'N 45°30'N 45°25'N 45°20'N 45°15'N 45°10'N

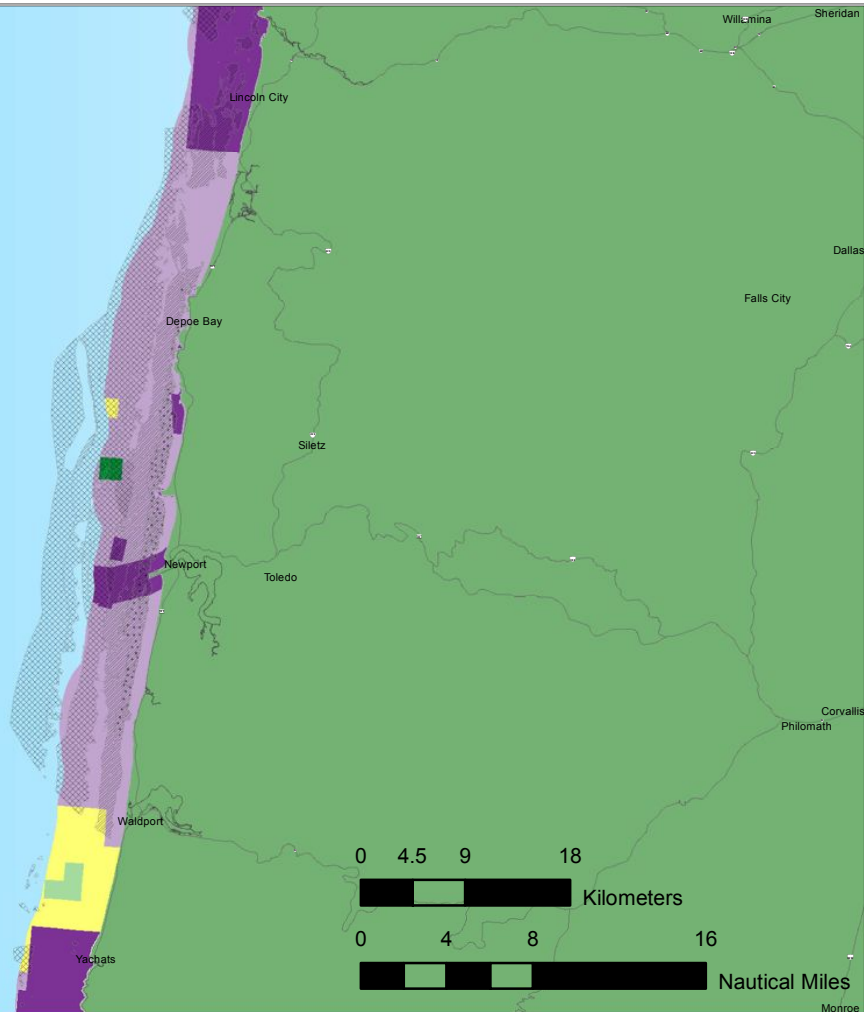
# Draft Comprehensive Plan for TSP Amendment Process

## LINCOLN County

- Permitted MREC Sites
- Marine Resource Development Area
- Marine Resource Use Management Area
- Marine Resource Conservation Area
- Marine Renewable Energy Exclusion Area
- Top 21% Coastal MREC Suitability
- Top 19% Middepth MREC Suitability
- Top 20% Offshore MREC Suitability



Maps generated by Andy Lanier  
Created 7.11.2012



124°45'W 124°35'W 124°25'W 124°15'W 124°5'W 123°55'W 123°45'W 123°35'W 123°25'W

45°5'N  
45°0'N  
44°55'N  
44°50'N  
44°45'N  
44°40'N  
44°35'N  
44°30'N  
44°25'N  
44°20'N

# Draft Comprehensive Plan for TSP Amendment Process

## LANE County

- Permitted MREC Sites
- Marine Resource Development Area
- Marine Resource Use Management Area
- Marine Resource Conservation Area
- Marine Renewable Energy Exclusion Area
- Top 21% Coastal MREC Suitability
- Top 19% Middepth MREC Suitability
- Top 20% Offshore MREC Suitability



Maps generated by Andy Lanier  
Created 7.11.2012

124°30'W 124°25'W 124°20'W 124°15'W 124°10'W 124°5'W 124°0'W 123°55'W 123°50'W 123°45'W

44°15'N

44°10'N

44°5'N

44°0'N

43°55'N

Florence

Dunes City

0 2.5 5 10  
Kilometers

0 2 4 8  
Nautical Miles

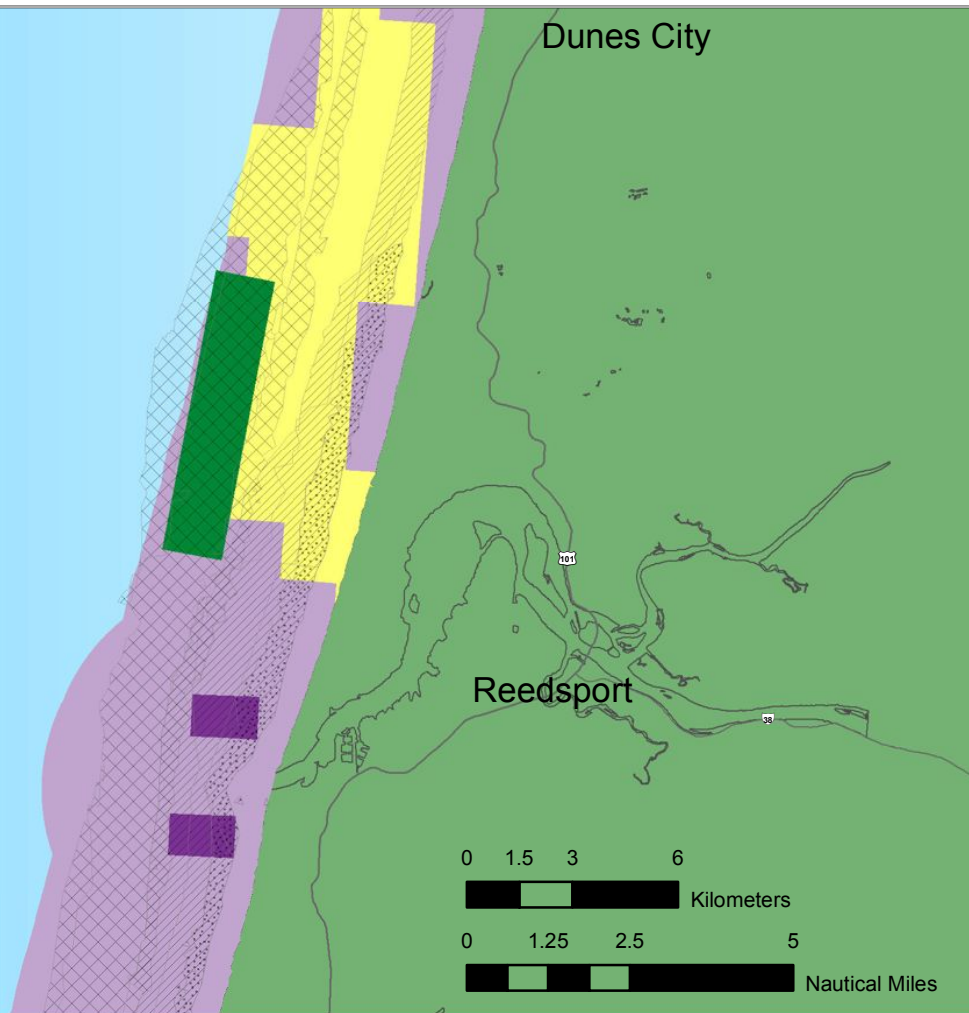
# Draft Comprehensive Plan for TSP Amendment Process

## DOUGLAS County

- Permitted MREC Sites
- Marine Resource Development Area
- Marine Resource Use Management Area
- Marine Resource Conservation Area
- Marine Renewable Energy Exclusion Area
- Top 21% Coastal MREC Suitability
- Top 19% Middepth MREC Suitability
- Top 20% Offshore MREC Suitability



Maps generated by Andy Lanier  
Created 7.11.2012



124°25'W

124°20'W

124°15'W

124°10'W

124°5'W

124°0'W

43°50'N

43°45'N

43°40'N

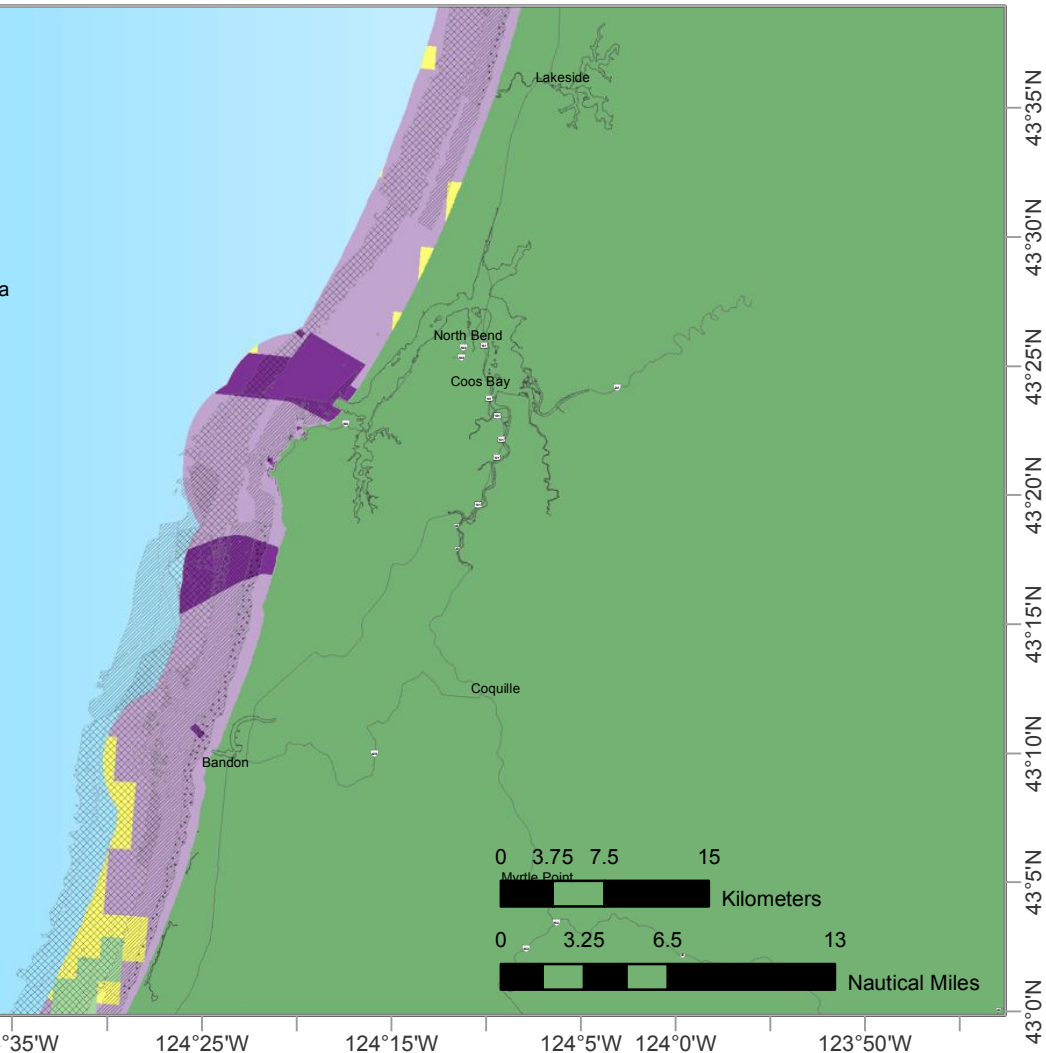
# Draft Comprehensive Plan for TSP Amendment Process

## COOS County

- Permitted MREC Sites
- Marine Resource Development Area
- Marine Resource Use Management Area
- Marine Resource Conservation Area
- Marine Renewable Energy Exclusion Area
- Top 21% Coastal MREC Suitability
- Top 19% Middepth MREC Suitability
- Top 20% Offshore MREC Suitability



Maps generated by Andy Lanier  
Created 7.11.2012



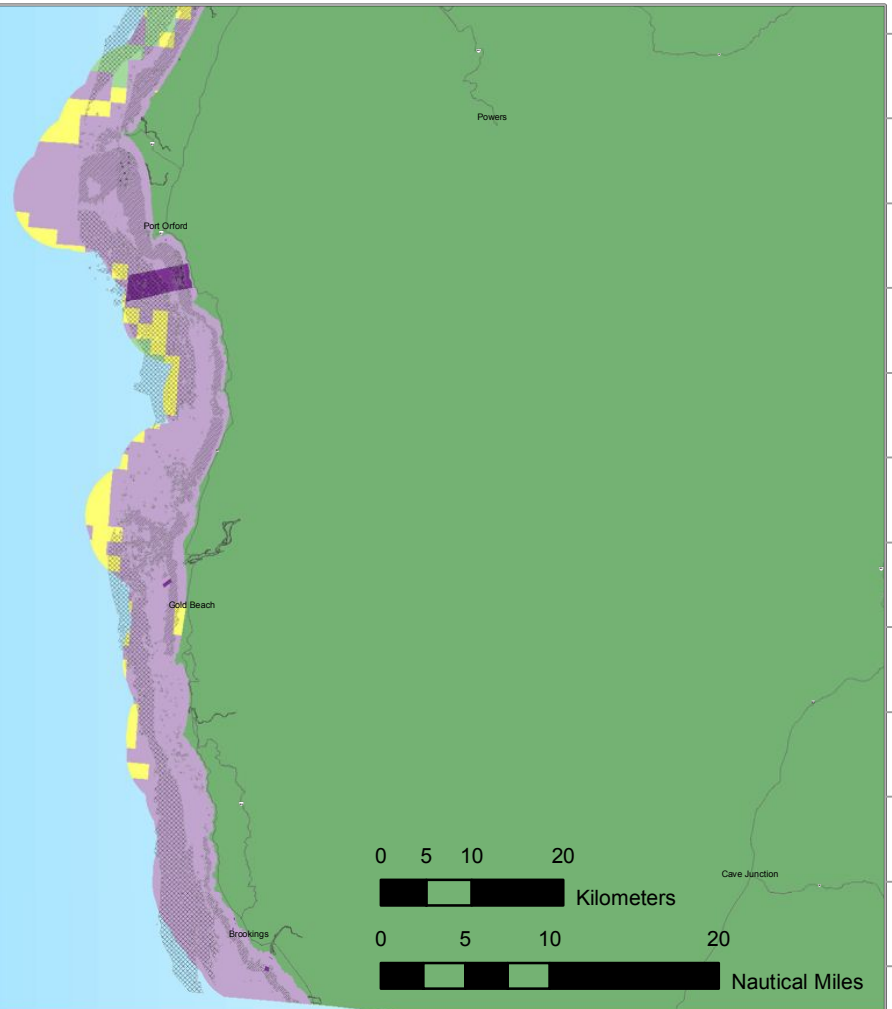
# Draft Comprehensive Plan for TSP Amendment Process

## CURRY County

- Permitted MREC Sites
- Marine Resource Development Area
- Marine Resource Use Management Area
- Marine Resource Conservation Area
- Marine Renewable Energy Exclusion Area
- Top 21% Coastal MREC Suitability
- Top 19% Middepth MREC Suitability
- Top 20% Offshore MREC Suitability



Maps generated by Andy Lanier  
Created 7.11.2012



125°15'W 125°5'W 124°55'W 124°45'W 124°35'W 124°25'W 124°15'W 124°5'W 123°55'W 123°45'W 123°35'W

43°00'N  
42°55'N  
42°45'N  
42°35'N  
42°25'N  
42°15'N  
42°05'N